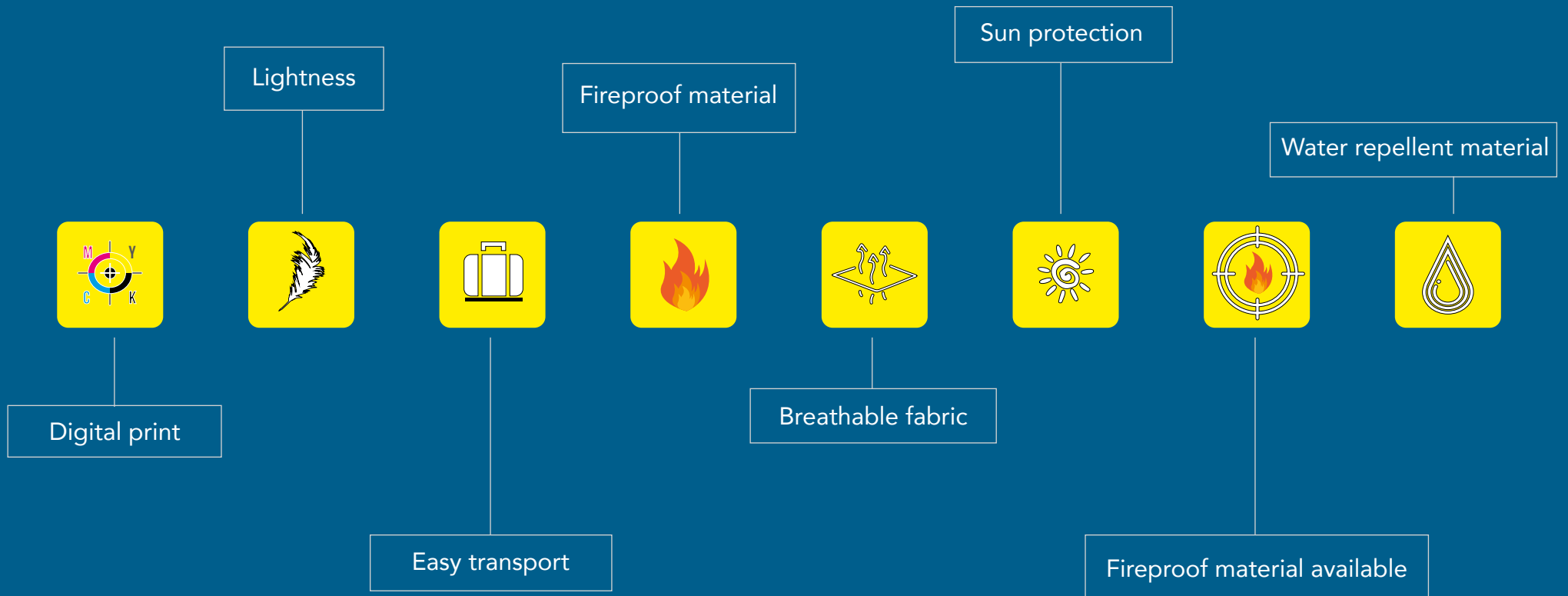
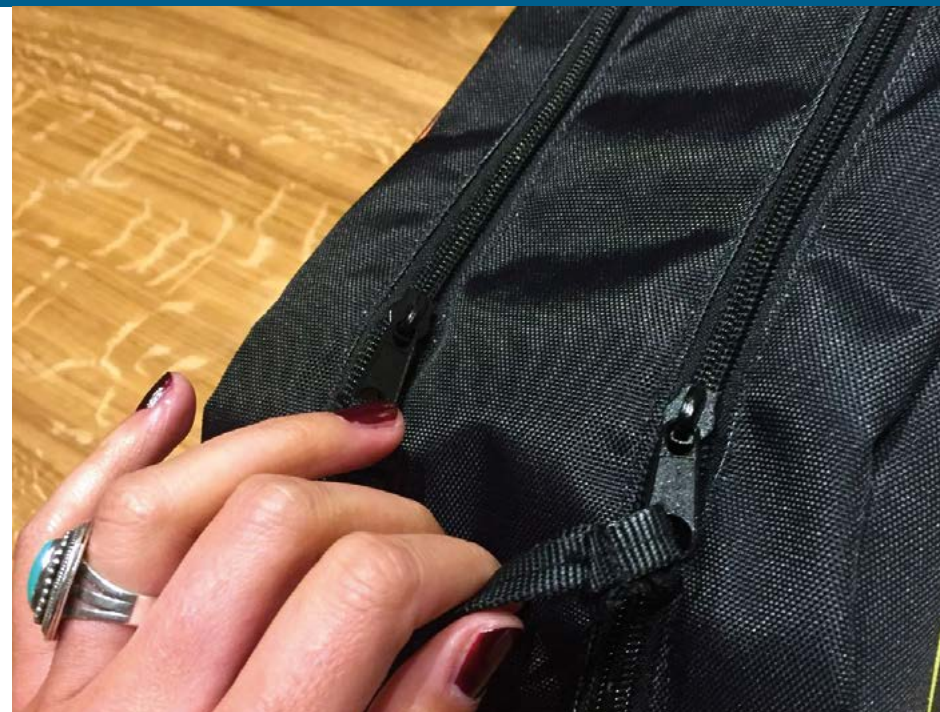
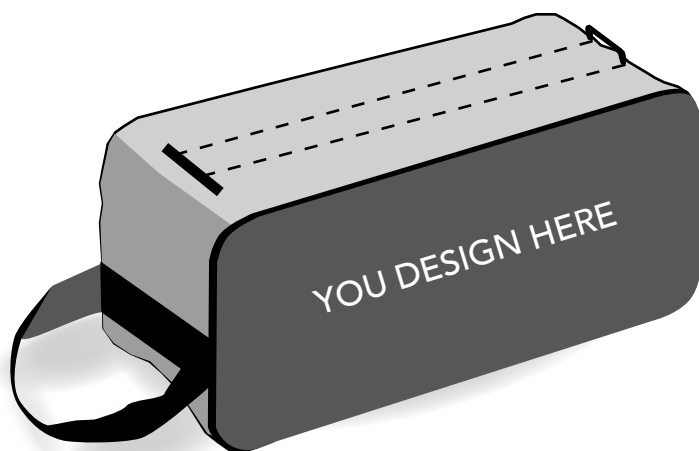


# OUR SYMBOLS



Any sport requires a change of shoes, even just a replacement between before and after the activity. We can customize the shoes bag that every athlete brings with them. The ElleErre shoes bags are customizable on both sides, they have a double zipper for the opening, an handy handle and a reinforced eyelet for air exchange. They are ideal as gadgets, such as prizes or race packs, as a kit of a team uniform of every sport. High print quality and brilliant colors make the ElleErre shoes bags an excellent communication and sponsorship tool.

- Customizable with any type of graphics or colors
- Double zipper to facilitate opening
- Practical handle
- Reinforced eyelet for air change



The ElleErresportbag is designed for every kind of sports and it's perfect for travelling. Customizable on both sides even with fluo colors it is an ideal tool for sponsoring and teams. The luggage compartment bag is made of flameproof polyester fabric, the sport bag has a zipper on the top of the bag and it has two handcuffed. The standard measures are 60 x 38 cm but ElleErre is able to make bags of any size according to the needs.

- Customizable with any type of graphics or colors
- Breathable polyester fabric
- With zipper and practical handles
- Easy to use

